

NIKKON®

GIANT II LED FLOODLIGHT



GIANT II 500W



GIANT II 1000W

LUMINAIRE SPECIFICATIONS

- Power 500W
1000W
- Fitting Material Non-Corrosive Cast Aluminium
- Fitting Color Grey
- Optical Cover Clear Tempered Glass
- Ingress Protection IP66
- Impact Protection IK08
- Voltage 220 ~ 240 Vac 50 / 60 Hz
- Power Factor ≥ 0.9 (at Full Load)
- Operating Temperature $-40 \sim 45^{\circ}\text{C}$
- Installation Adjustable Mounting Bracket
- Surge Protections 10KV

OPTIONAL FEATURES

- Beam Angle 60° (500W)
30° (1000W)
90° (Upon Request)

LED MODULE SPECIFICATIONS

- Color Temperature 5000K
- LED Chips 3030
- Color Rendering Index (CRI) $R_a > 80$
- L70 100,000 Hrs @ 25°C
- PCB Material Metal Core

COMPLIANCE STANDARD

- LED LM80, UL, RoHS
- Driver CE, EN62493, EN61347, EN50581, EN55015, EN61000, EN61547, EN62384

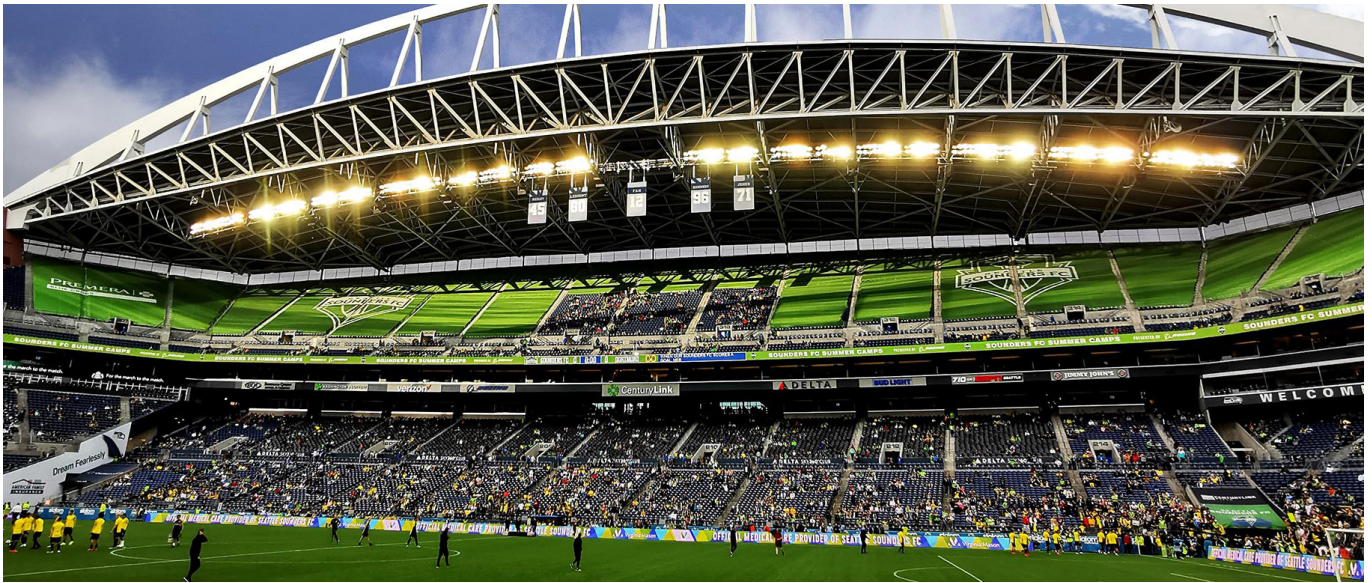
APPLICATION

- Sport Lighting, Stadium Lighting, Jetties, Highmast

MEASUREMENT & ORDER CODE

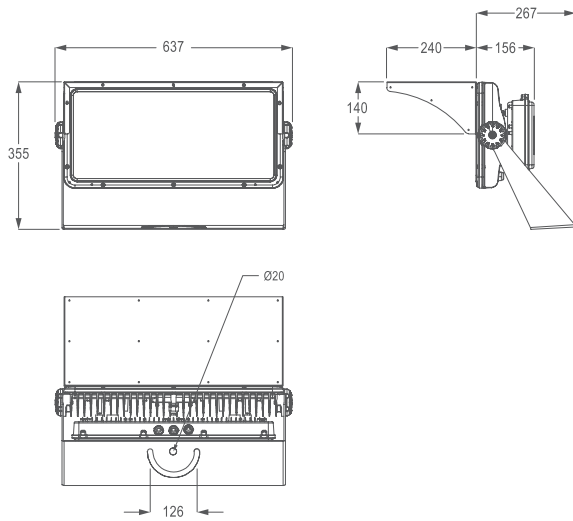
| WATTAGE | LUMEN | CONSUMPTION | CARTON DIMENSION (L x W x H) mm | NETT WEIGHT |
|---------|--------|-------------|------------------------------------|-------------|
| 500W | 70000 | 500W | 700 x 520 x 225 | 20.5 kg |
| 1000W | 140000 | 1000W | 735 x 720 x 230 | 38.0 kg |

* Please indicate LED color temperature and optic when ordering.
* All result tested base on 5000K CCT LEDs.

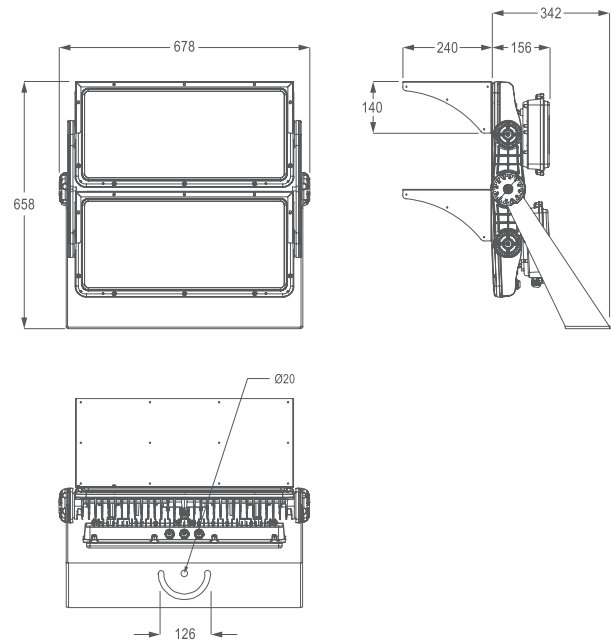


DIMENSION

GIANT II 500W

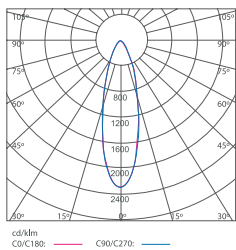


GIANT II 1000W

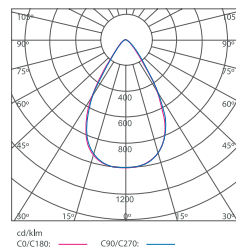


PHOTOMETRIC

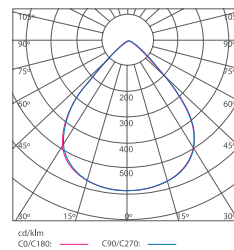
30° (1000W)



60° (500W)



90° (Upon Request)



Note: All specifications are subject to change without prior notice for product improvement. Images, pictures and illustrations used are for illustrative purposes only and the color printed may differ from the actual product.