

# NIKKON®

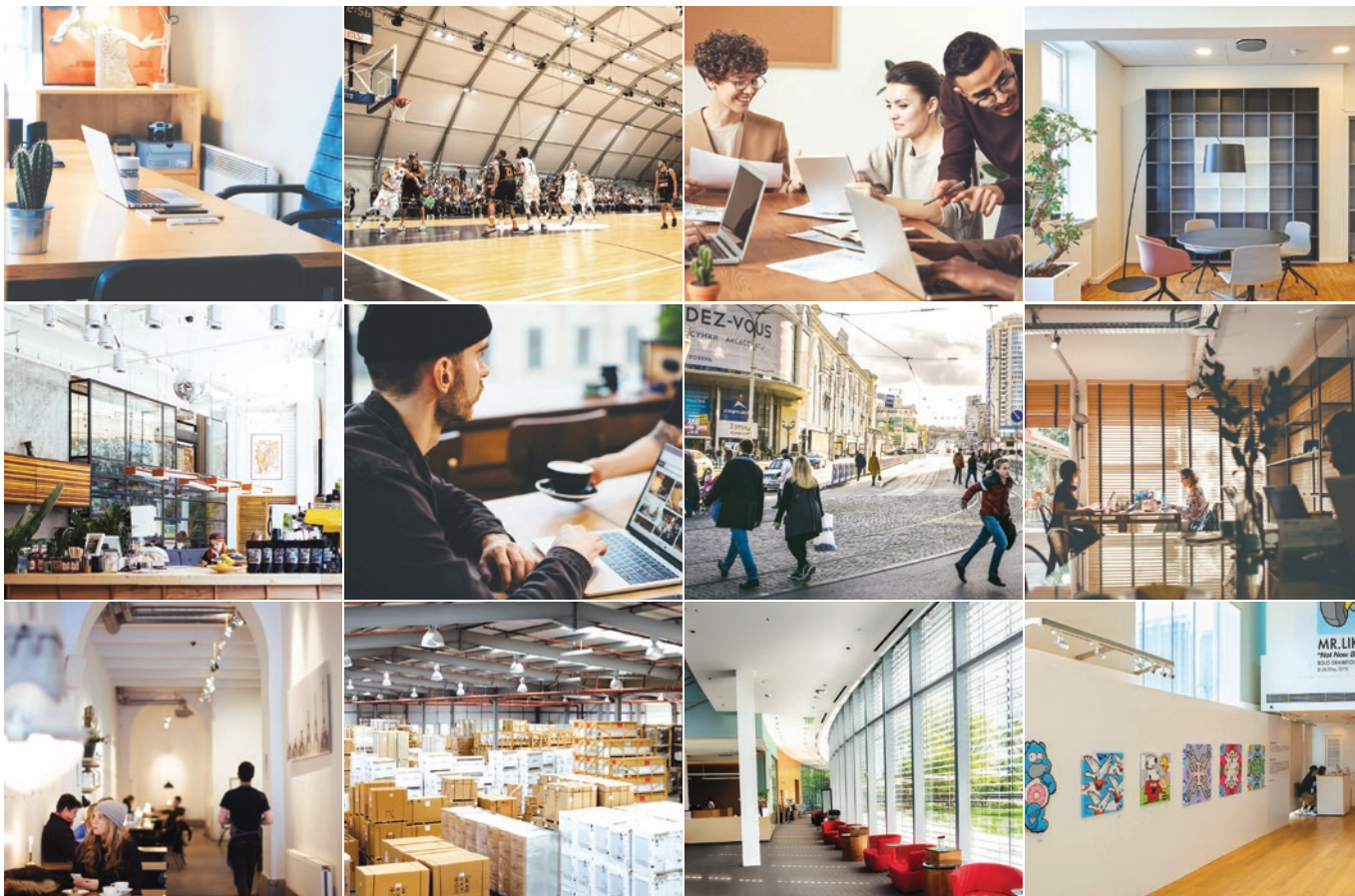
## LED LIGHTING BROCHURE



Human centric lighting. For people.

Our Technology Partner:

**ILCS**®  
Intelligent Light Control System



Note: All specifications are subject to change without prior notice for product improvement. Images are for illustrative purposes only and the colour printed in the brochure may differ from actual product.

Light is essential. Light is a part of our everyday life.

## Introduction

Light is a medium of energy through which we perceive and interact with our environment. Human sense colour, light intensity, shadows, reflections and other light sources. It is all around us and become a part of our lives. In general, lights and artificial lightings are widely used as a source for impressions, expressions, performances and inspirations. Artificial light gives us more time to complete daily works and tasks, continuous learning around the clock, leisure and activities.







## Our Brands & Products

- LED **Street Lantern**
- LED **Bay Lighting**
- LED **Floodlight**
- LED **Outdoor Commercial Lighting**

‘human centric lighting.  
for people.’

# NIKKON<sup>®</sup>

The progression of the NIKKON Complete Lighting Solutions Workflow begins from the initial ideation phase to the installation of the final products. We specialise in manufacturing LED lighting products that boast exceptional quality, reliability and energy efficiency. Our company holds UKAS accreditation for ISO 9001:2015 (Quality Management System) and EMS ISO 14001:2015 (Environmental Management System) in the LED Lighting segment. Currently, we offer an extensive range of industrial lighting solutions to both domestic and global markets. NIKKON remains steadfast in its commitment to delivering lighting solutions that enhance the lives and well-being of our society.





Intelligent Light Control System

## Transforming Human Lives Through Smart Lighting

iLCS is an intelligent light control system designed to manage, control and monitor the lighting infrastructure of cities, leading to a reduction in energy consumption. We provide intelligent solutions in data management, energy efficiency, operating cost reduction, traffic flow management and environmental sensors, including monitoring air quality and CO<sub>2</sub> emissions. Our solutions aim to enhance lighting infrastructure, encompassing both urban and rural areas. iLCS plays a pivotal role in creating smart cities, facilitating the transformation of cities into intelligent city centers.

## Awards & Accreditation



**Most Innovative Product Award**  
by Australian Smart Lighting Summit 2018



**Most Innovative Product Award**  
by Middle East Lighting Design Summit 2018



**Participation Award**  
by Abu Dhabi Smart City Summit 2019

# SMARTCITYVISION

The vision of a smart city is centered on harnessing technology efficiency, data and innovation to enhance urban operations, address the complexity and challenges of city life and promoting sustainable development. Within the context of a smart city, various interconnected systems and technologies are integrated to optimise urban infrastructure, services and resources.

These cities seamlessly integrate an array of cutting-edge technologies, including the Internet of Things (IoT), motion sensors, data analytics and real-time monitoring. Through the collection and processing of data, these technologies synergise to markedly improve operational efficiency and effectiveness. The goal is to create a more efficient, responsive and liveable urban environment.





smart system  
and connections

**ILCS**<sup>®</sup>

Intelligent Light Control System



Shape greater future with smart lighting.  
The key to support smart city realisation.



# iLCS Service & System Benefits



**Infrastructure  
Connectivity**



**Smart  
Sustainable City**



**Improved City  
Services**



**Urban IoT  
Automation**



**Energy Savings**



**Public Security**



**Economic Growth**



**Quality of Life**



**Environmental  
Analysis**

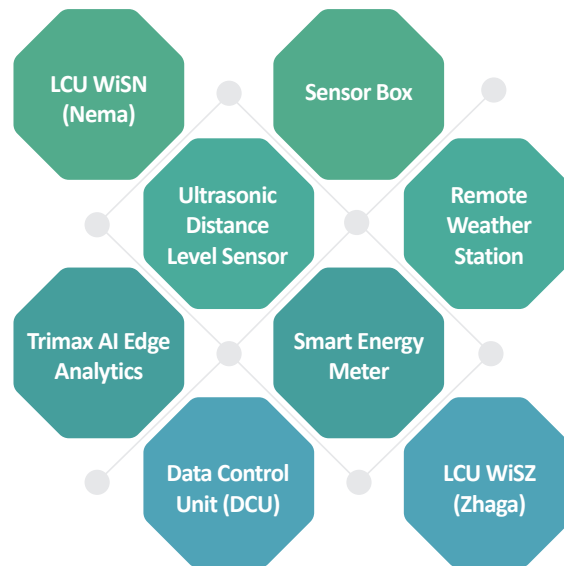




## STRENGTHENING CITY INFRASTRUCTURE & SECURITY KEY FEATURES:

- Weather and Air Quality Monitoring System
- Intelligent Real-Time Monitoring System / Adaptive Dimming
- Traffic Flow Management
- Public Security Management System
- Smart Metering
- Visual Intelligence and Analysis
- Wireless Smart Parking System
- Telecommunication Hub
- Motion Detection
- Data Analytics
- AI Traffic and Mobility

## PRODUCT RANGE



# iLCS Reliability and Robustness

Light Control Unit (LCU) - Each node of the network is embedded with a GPS receiver and an astronomic clock. This enables the node to continuously function independently based on the last profile settings when it is completely isolated (standalone) or if the network is under maintenance. The semi-transparent nature of the enclosure allows an embedded photocell to sense daylight intensity to autonomously turn on the luminaire if there are unpredictable weather patterns during the daytime.

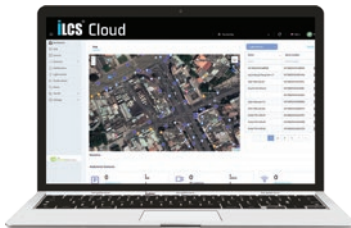


- **Light Control Unit (LCU NEMA)**

iLCS LCU is a unique solution to establish a smart city neural infrastructure network.

LAN Connection  
to backbone

GPRS, WLAN,  
Ethernet and Fibre



- **Cloud Vision**

Cloud based platform for real-time control of luminaires.



- **Data Control Unit (DCU)**

The DCU monitors, controls and manages all connected LCUs. It functions as the gateway to the digital world.





# Smart Flexible

iLCS provides municipalities with the flexibility to manage data, obtain valuable insights and remotely control luminaires. City operators can manage traffic flow and optimise maintenance schedules to ensure that lights are only illuminated when required, with dimmable controls further reducing energy consumption.

iLCS streamlines the process of automating your lighting, providing a user-friendly approach that offers convenience and flexibility from any location and at any time.



## iLCS Cloud

Web-based remote control management dashboard



Real-time monitoring



Notification and alerts



Remote diagnostics



Customize setting for luminaires



Advanced analytics



## LED Street Lantern



LED street lantern emits very little heat. It is energy efficiency, eliminating energy waste and a viable solution to reduce carbon emissions and also environmentally friendly. It can deliver enormous savings on total energy costs for municipalities and utility operators.

## LED Street Lantern

LED street lighting is important on the roads to reduce glare for drivers, prevent crimes and eradicate dangers as we concern about public safety.

**NIKKON<sup>®</sup>**



**TRIMAX R3**  
75W~250W  
iLCS compatible



**TRIMAX R2**  
75W~250W  
iLCS compatible



**TRIMAX R1**  
75W~250W  
iLCS compatible





## LED Street Lantern



LEDXION  
**GALAXY M1 & M2**  
30W~220W  
ilcs<sup>®</sup> compatible



LEDXION  
**S466**  
200W~350W  
ilcs<sup>®</sup> compatible



**SIGMA M & L**  
60W~200W  
ilcs<sup>®</sup> compatible



**MURA S, M, L & XL**  
30W~300W



**ALPHA PRO**  
30W~200W



**ALPHA**  
60W~180W

# NIKKON®



LEDXION  
**S536**  
150W~210W  
ilcs compatible



LEDXION  
**S436**  
150W~190W  
ilcs compatible



ARGENTO  
**S436-MP**  
150W~180W  
ilcs compatible



LEDXION  
**S533**  
90W~170W  
ilcs compatible



LEDXION  
**S433**  
90W~150W  
ilcs compatible



ARGENTO  
**S433-MP**  
90W~150W  
ilcs compatible

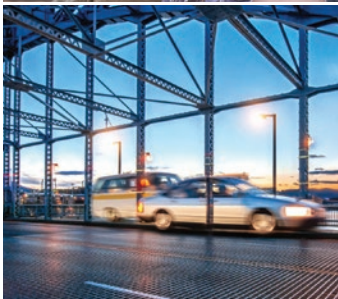
## LED Street Lantern



Better street lighting could potentially create feeling of comfort and secure to the drivers, riders and pedestrians.



Improving visibility on the road at night encourage productivity among citizens. It gives them confidence to ride public transportation.



It is commonly used in recreation and public parks. It lights the pathways and surrounding areas for street users such as childrens, skaters, joggers and cyclists.





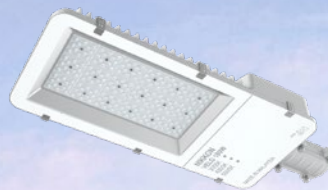
# NIKKON<sup>®</sup>



LEDXION  
**S439**  
30W~60W  
iLCS<sup>®</sup> compatible



ARGENTO  
**S439-MP**  
30W~60W  
iLCS<sup>®</sup> compatible



DRACO  
**VELO**  
30W~180W



**ECO MINI  
INTEGRATED SOLAR**  
6W (100W)~18W (300W)



**RA365 GEN 2  
INTEGRATED SOLAR**  
30W~120W  
iLCS<sup>®</sup> compatible



**RA365 GEN 3  
INTEGRATED SOLAR**  
60W~120W  
iLCS<sup>®</sup> compatible



## LED Bay Lighting



Bay lightings are usually seen at factories, warehouses, gymnasiums, exhibition events, shopping complexes with relatively high ceilings. They are designed to constantly illuminate large space areas and multipurpose halls.

## LED Bay Lighting

LED bay lighting provides adequate lighting in terms of intensity, direction, contrast and evenly distributed. It has many features that make them a great choice for commercial spaces such as durability, longer lifespan, little maintenance and cost savings.



# NIKKON®



DRACO  
**UF1 HIGHBAY**  
100W~200W



DRACO  
**UF3 HIGHBAY  
(MOTION SENSOR)**  
100W~300W



DRACO  
**UF5 HIGHBAY**  
100W~200W



## LED Bay Lighting



Good lighting can increase the quality of work particularly in heavy industrial setting. It highlights moving machinery and other safety hazards.



Bay lightings are used to create safety of the workers and prevent unwanted injuries. It reduces machine accidents, spills or trips such as cords running across the floor.



Bay lightings are usually applied on large indoor space areas such as factories, industrial facilities, warehouses, stores, multipurpose halls and community centers.



**NIKKON®**



**ARGENTO  
CUBO LOWBAY (SURFACE)  
/ (RECESSED)**  
80W~150W



**LEDXION  
SMS LOWBAY (SURFACE)  
/ RMS (RECESSED)**  
40W~160W



**DRACO  
HELÓ HIGHBAY**  
50W~200W



**HELÓ PLUS S, M & L  
HIGHBAY**  
100W~240W



**LEDXION  
S6310 MAXI HIGHBAY**  
150W~190W  
**ilcs** compatible



**LEDXION  
S6310 MEDI HIGHBAY**  
80W~120W  
**ilcs** compatible



**LEDXION  
S6310 MINI HIGHBAY**  
40W~50W  
**ilcs** compatible

## LED Floodlight



Floodlights are broad-beamed, high intensity artificial lights. They are often used to illuminate more focused types of works, tasks and activities taking place. Appropriate lighting can reduce eye fatigue.



# LED Floodlight

**NIKKON®**

LED floodlight is ideal for all kind of sports stadiums. The superior light output is important to highlight elements during games when these performers attract and capture the audiences.



LEDXION  
**AEROS STAINLESS STEEL**

360W~540W

**ilcs** compatible



LEDXION  
**AEROS II STAINLESS STEEL**

480W~720W

**ilcs** compatible

LEDXION  
**AEROS III STAINLESS STEEL**

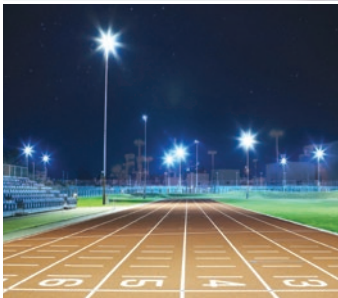
500W~1500W

## LED Floodlight

It can withstand harsh weather environmental conditions. It works for wide variety of billboard advertising lighting applications.



Floodlights added security and illumination for outdoor public spaces, business premises, sports clubs and workplace facilities.



To illuminate large outdoor area or the exterior of a building during night. Suitable for facade buildings, port area, constructions and parking area.



# NIKKON®



**CERVELLI S5 & S3**  
100W~500W



**DRACO  
ZULO**  
30W~200W



**DRACO  
ZULO II**  
50W~400W



**MELO**  
30W~400W



**GIANT**  
450W~900W



**GIANT II**  
500W~1000W



**GIANT III**  
800W~1200W



**TERANG**  
50W~500W



## LED Outdoor Commercial Lighting



Outdoor lighting is an artificial lighting to illuminate the outdoor areas such as parks and walkways to provide safety in the dark area and increase the efficiency of human activities at night.

## LED Outdoor Commercial Lighting



**NIKKON®**



**VUPA - A1**  
60W~150W

## LED Outdoor Commercial Lighting



Non-corrosive garden light is able to withstand harsh weather and environment. This warm white garden light creates visual comfort for pedestrians.

Brighten outdoor area during night with garden light. Suitable for recreational parks, playgrounds, walkways, courtyard, garden and swimming pool.





## LED Outdoor Commercial Lighting



**NIKKON<sup>®</sup>**



**VUPA - G1**  
40W~75W



**C**ustomer satisfaction is our common goal and that is what creates a cohesion that is necessary for sustained success. Our highly performance team members and dedicated professionals are able to provide on-site training, services, installation, maintenance and troubleshooting. It is our priority to provide satisfying results to customers and we constantly focus on meeting the expectations of our business partners around the world.

## Hq, Malaysia

SUCCESS ELECTRONICS & TRANSFORMER MANUFACTURER SDN. BHD.

No. 3, 5 & 7, Jalan TSB 8, Taman Industri Sungai Buloh,  
47000 Sungai Buloh, Selangor, Malaysia. 199001009281 (200853-K)

Tel : +603 6279 2800

Fax: +603 6157 2722

Sales Enquiry:

Domestic: [ses@success.com.my](mailto:ses@success.com.my)

Overseas: [export@success.com.my](mailto:export@success.com.my)



## Global Networks

### Singapore

NIKKON LIGHTING & ELECTRICAL PTE. LTD.

Tel : +65 6742 4377

Fax : +65 6742 4366

Email : [enquiry@nikkonlighting.com.sg](mailto:enquiry@nikkonlighting.com.sg)

Website : [www.nikkonlighting.com.sg](http://www.nikkonlighting.com.sg)

### Singapore

SUCCESS TRANSFORMER PTE. LTD.

Tel : +65 6742 4808

Fax : +65 6742 4708

Email : [enquiry.stpl@success.com.my](mailto:enquiry.stpl@success.com.my)

Website : [www.qpstransformers.com](http://www.qpstransformers.com)

### Indonesia

PT BOXON NIKKON JAYAINDO

Tel : +62 21 2265 2860

Fax : +62 21 2265 2745

Email : [marketing@nikkonlighting.co.id](mailto:marketing@nikkonlighting.co.id)

Website : [www.nikkonlighting.co.id](http://www.nikkonlighting.co.id)

### Thailand

NIKKON LIGHTING (THAILAND) CO., LTD.

Email : [export@success.com.my](mailto:export@success.com.my)

Website : [www.nikkonlighting.com](http://www.nikkonlighting.com)

**NIKKON®** is a registered trademark of Success Electronics & Transformer Manufacturer Sdn. Bhd. (Success) in Malaysia and other countries. Success is a private limited company wholly owned by Success Transformer Corporation Berhad (STC). The company is incorporated in Malaysia with business registration number 199001009281 (200853-K) since 1980. Success is focusing in designing and distribution of industrial lighting, transformers & electrical apparatus and having its principal place of business at No. 3, 5 & 7, Jalan TSB 8, Taman Industri Sungai Buloh, 47000 Sungai Buloh, Selangor Darul Ehsan, West Malaysia.

© 2025 Success Electronics & Transformer Manufacturer Sdn. Bhd. All Rights Reserved.





We can build an impressive world for our people.



**Success Electronics & Transformer Manufacturer Sdn. Bhd.** 199001009281 (200853-K)

No. 3, 5 & 7, Jalan TSB 8, Taman Industri Sungai Buloh  
47000 Sungai Buloh, Selangor, Malaysia

Tel: +603 6279 2800  
Fax: +603 6157 2722



Nikkon Lighting



[www.success.com.my](http://www.success.com.my)  
[www.nikkonlighting.com](http://www.nikkonlighting.com)



Domestic: [ses@success.com.my](mailto:ses@success.com.my)  
Overseas: [export@success.com.my](mailto:export@success.com.my)